



San Francisco Tour Guide

Vivienne Zhang

Records of Tours

- Santana Row**
- Hayes Valley**
- Chinatown**
- Yerba Buena Garden**
- Golden Gate Park**
- South Park**
- Mission & 24th St**

- walk map
- statement
- sketches
- diagram

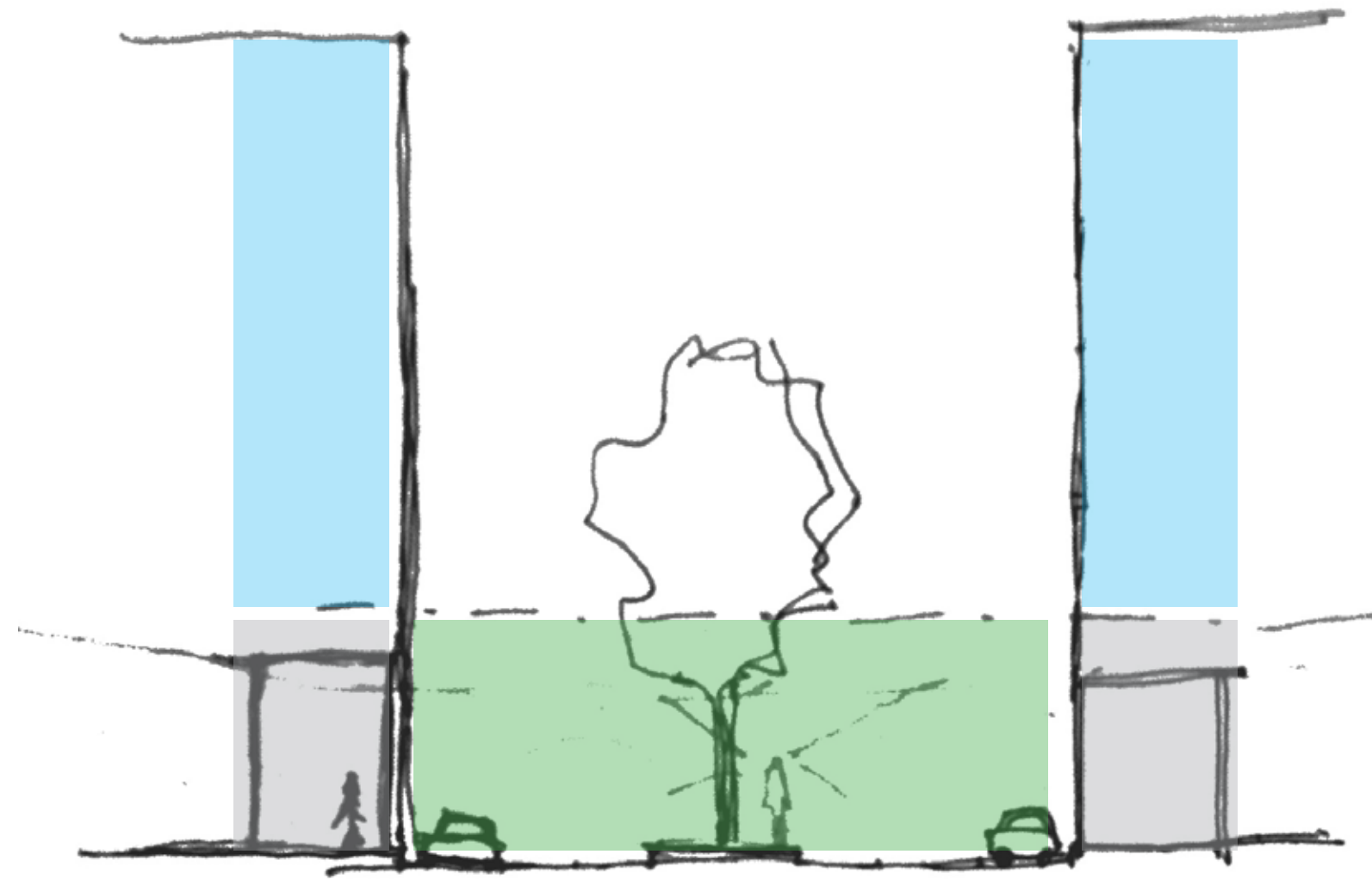
Santana Row
man-made pedestrian street

Santana Row is a good example of private-owned property that serves the public retail functions.

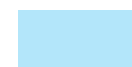
The street is well designed with comfortable scale and designated pedestrian circulation that will direct visitor intentionally.



street scape



retail



residential



circulation

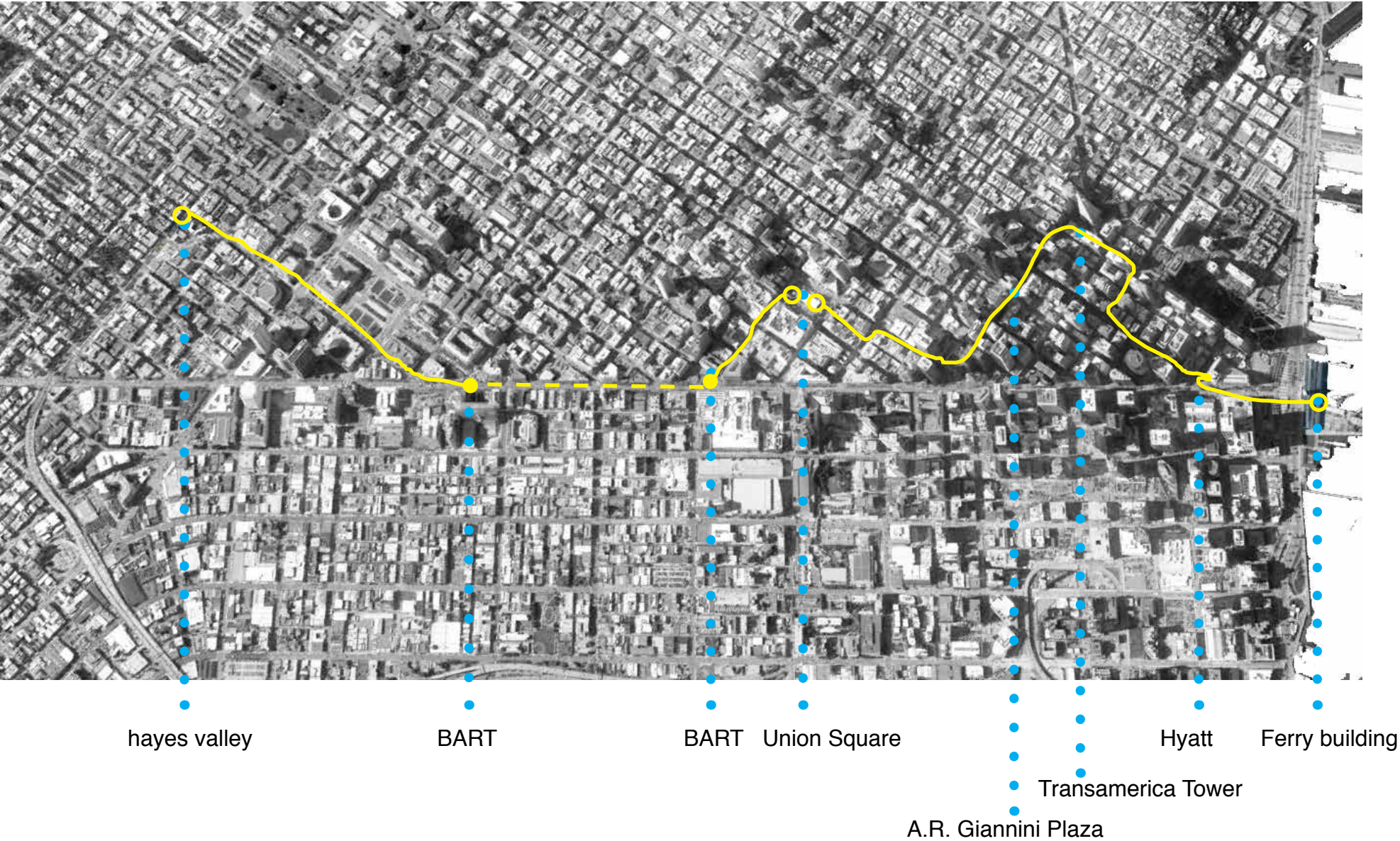
street section

Santana Row is a successful business model but it lacks the nature of public accessibility as its private ownership. But it has the right scale for retail activities. It also represents a good example for pedestrian-friendly streets.

The width of the street, the central division width, sidewalk, landscape setting, building height, arcade height, column arrangement need consideration in terms of creating a street visitors could walk through slowly and navigate easily.



Hayes Valley
temporary public space



walk map

POPOS

As the shortage of the available land for public use in the downtown of a city like San Francisco is a crucial issue nowadays, converting the existing land into parking lots or for other uses has become controversial. While visitors to San Francisco who are used to driving much more than taking public transportation probably would complain the parking in downtown, it seems a lot of the San Franciscans are happy with the way how it works in SF. It's not necessary to own a car or drive in San Francisco, while the convenient public transportation system could make commute easier.

At the same time, it's possible for the city to take advantage of the vacant land for more useful constructions other than parking lots, which could possibly create more job opportunities, in my point of view, and also bring a even-higher density into the city center.

While I'm impressed to the fact that the density in San Francisco downtown is not as high as it looks - as it's not even half of the density in Manhattan, New York City, how to improve the quality of the downtown working and living has been always worthy to explore.

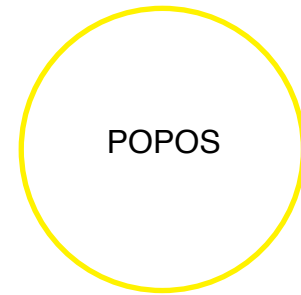
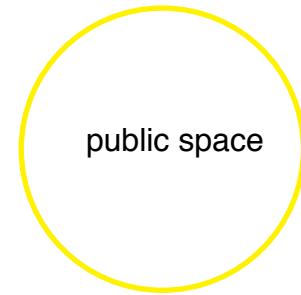
Private owned public open space (POPOS), as one solution regulated by the development department of San Francisco City to promote sharing more available space the public could share with on a private owned land, still sounds mysterious.

Who will maintain and use the space, when and where the space could be used and how public could access to the POPOS information and operation hours, all of the above questions rise the concern of land use in a high-density area. The debate of how to balance the public infrastructure among parking, recreational space for social and economic purposes could have never ended.

But POPOS is a definitely good for the downtown workers and residents, who get more better options while choosing the place to utilize and stay connected, physically.



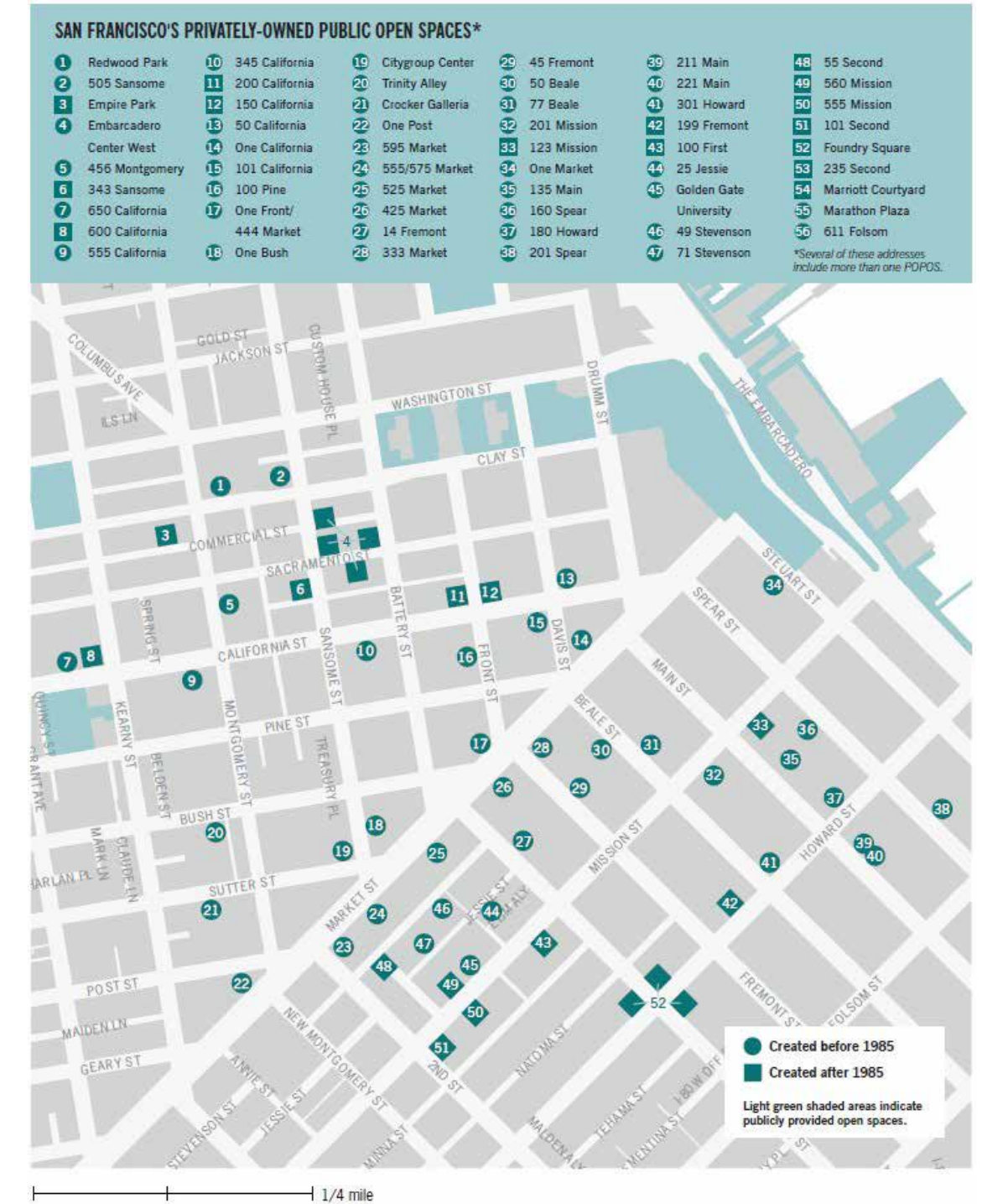
comparison



What's the best way to conduct the creation, use and management of POPOS and public spaces for the city and citizens' benefits?

Impact/Benefit	How to manage	Process	Access Acknowledge
socialization	business dept	feasibility study	social media
better neighborhood	development dept	long	people
jobs	city	depends on the project	press
business	sponsor		
real estate	public		
tourist			
	private property owner	requested by development dept	sign social media
increase parking space	city	shorter	local
	private company		

current POPOS in SF



from sfist.com

Chinatown
how would you understand a place?

texture
history
signage
demography
fabric

**Chinatown
Is
About
Memory.**

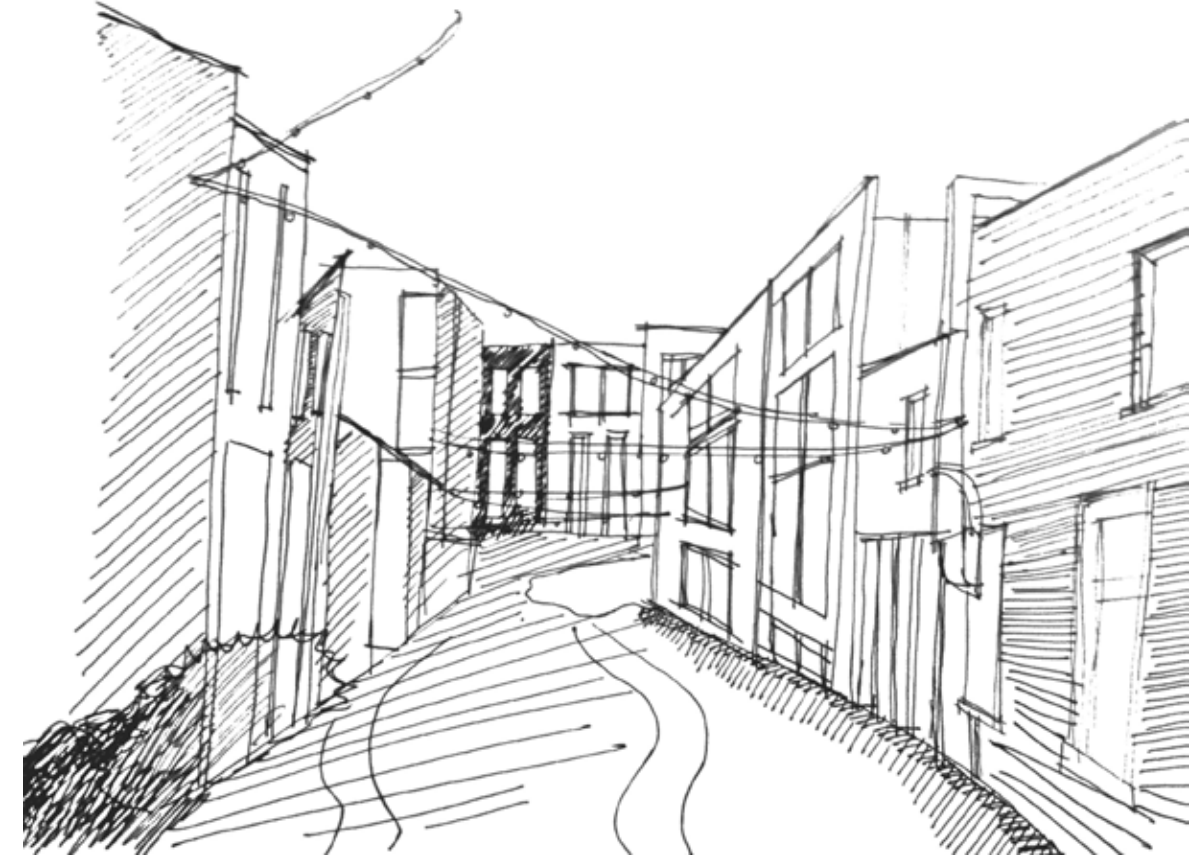
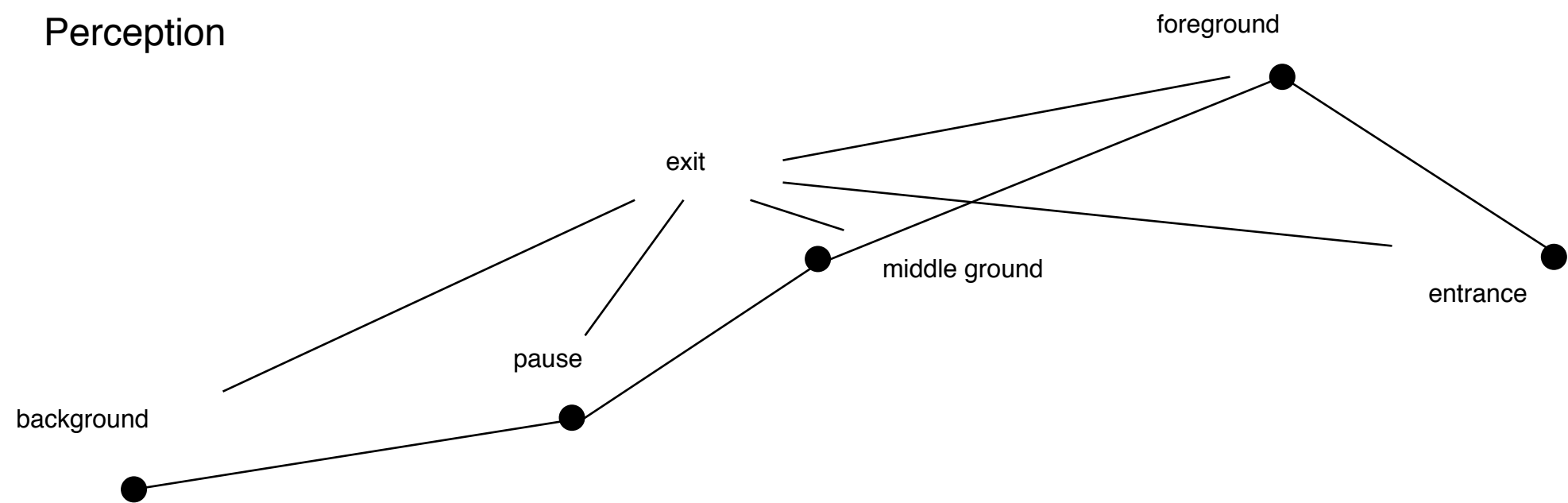
Chinatown is a neighborhood where Chinese immigrants live and grow. Its special contour increases its richness of the public space typology. Tourists, local citizens and Chinese culture merged together to form a complex yet interesting urban living scenario.



walk route

neighborhood

Perception



how would you visit a place?

Yerba Buena Garden

success of an artistic public space in the city center

Yerba Buena Garden is one of few places engaging so many activities and public participation in San Francisco city center.

It's carefully planned and designed within the existing urban settings. And it provides a great public space in the high-density area for the citizens to use and gather.

It's surrounded by many civic and public buildings, and it integrates lots of green open spaces. Its success helps define the guideline for conducting the use and renovation of accessible space.



important elements

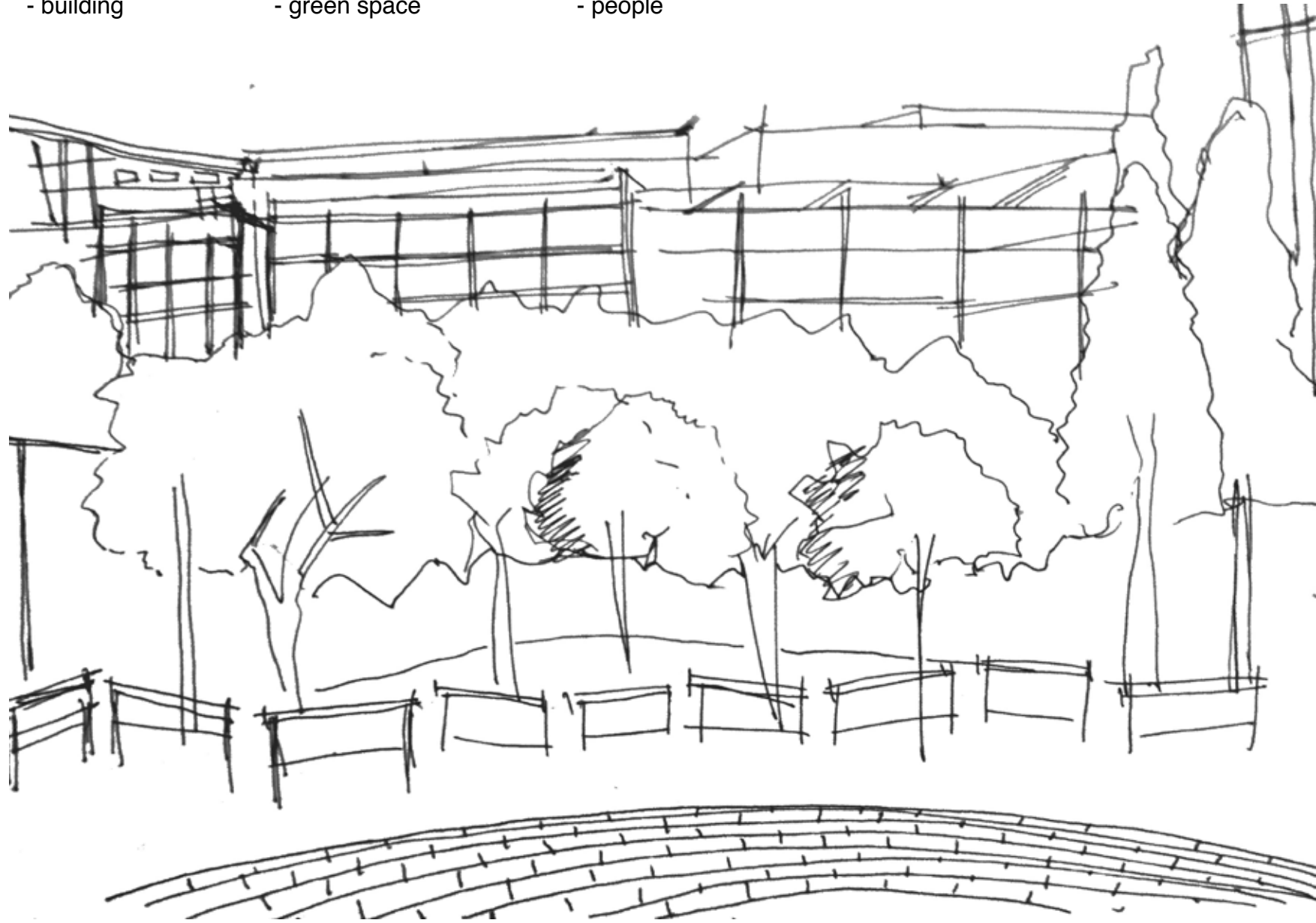
- people - tourist & citizen
- artistic space - gallery
- green space - nature environment
- gathering space - cafe
- permeability - easy circulation
- focus point - vision center
- public facility - support



- building

- green space

- people



boundary



green buffer

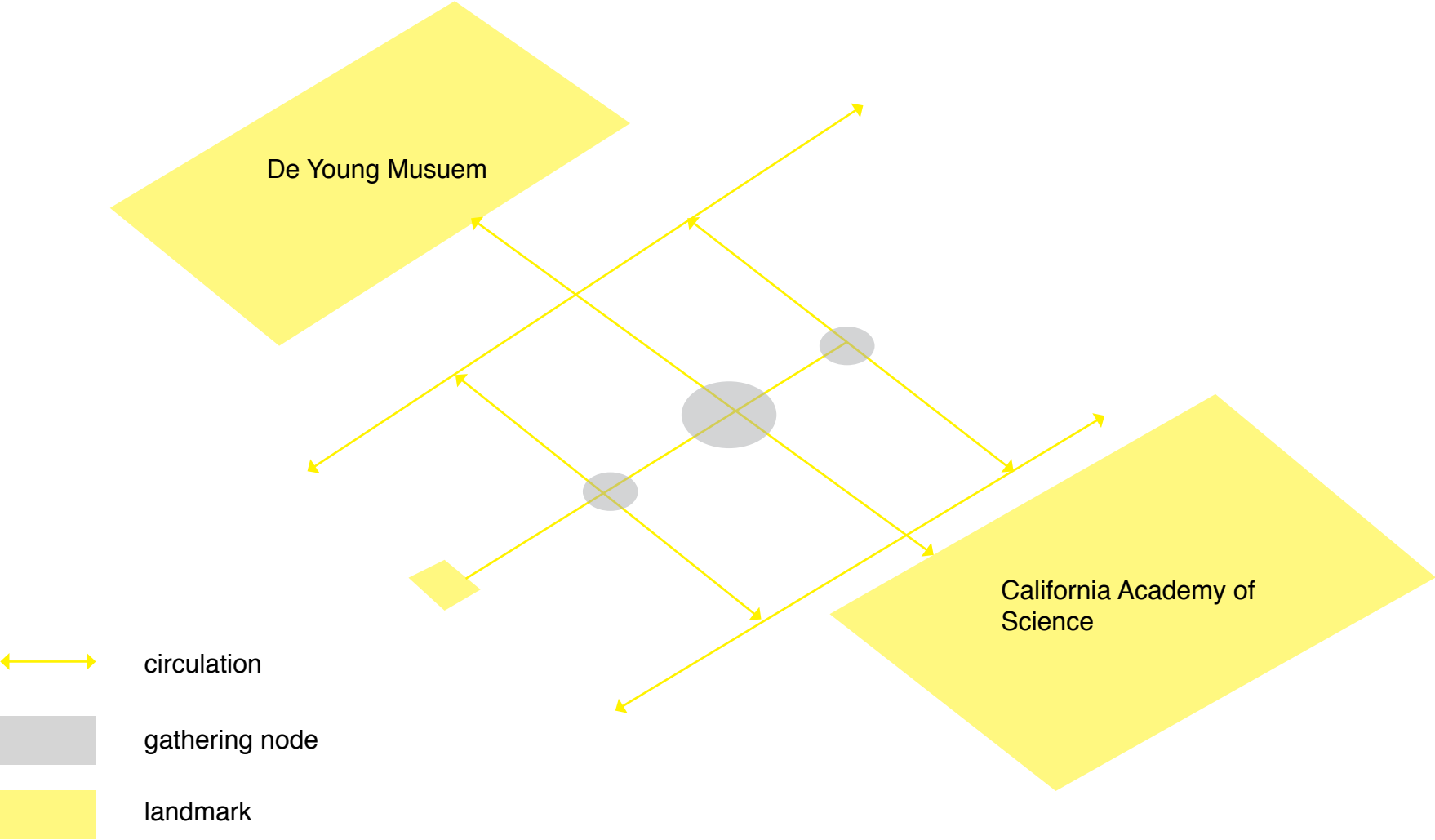


permiability

Golden Gate Park
large-scale green space for the city



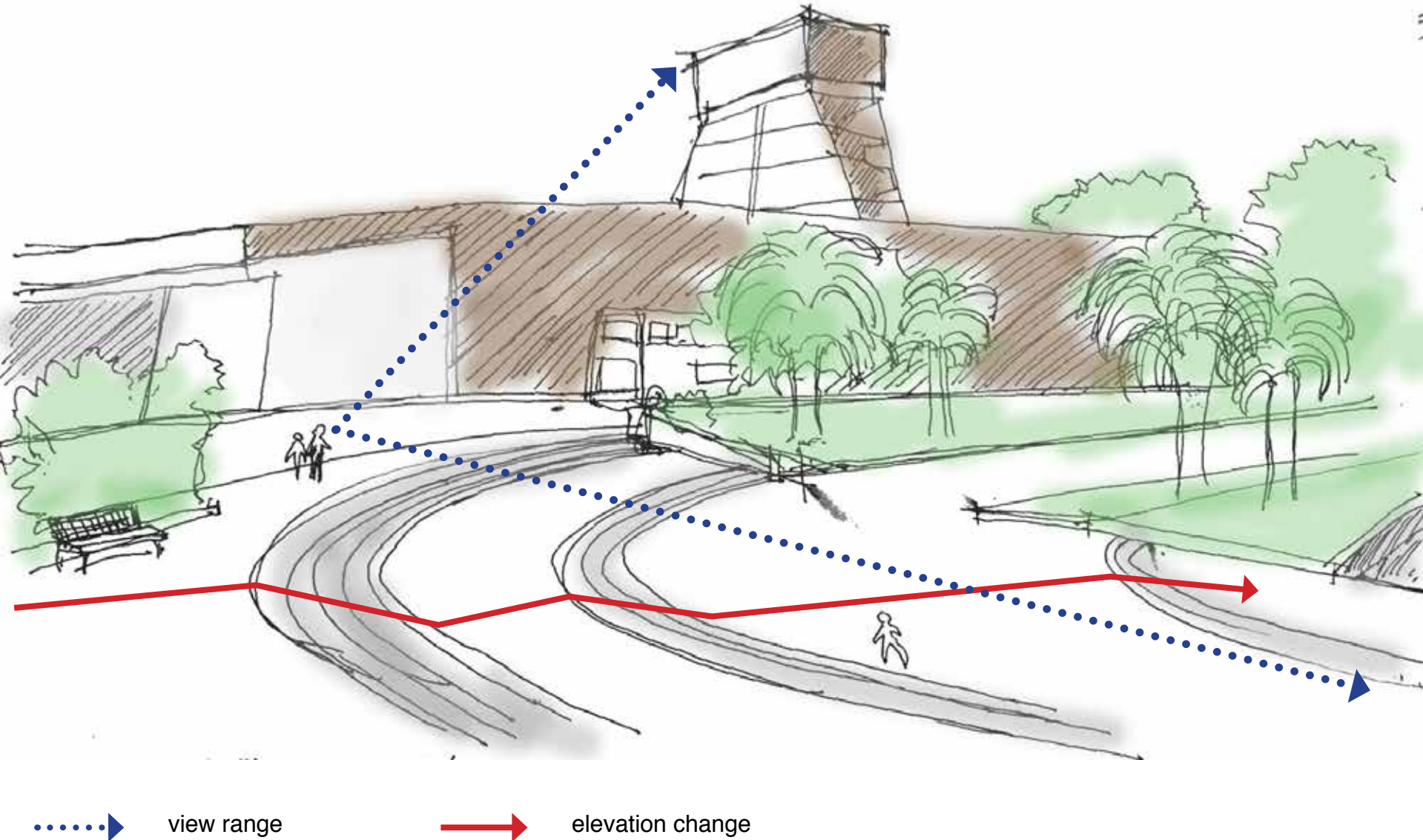
aerial map



connection

Golden Gate Park is the green lung of the city of San Francisco.

It provides a retreat place for the citizens while helping the preservation of the local vegetation species. It's also a great tourism attraction including several museums and outdoor facilities.



South Park

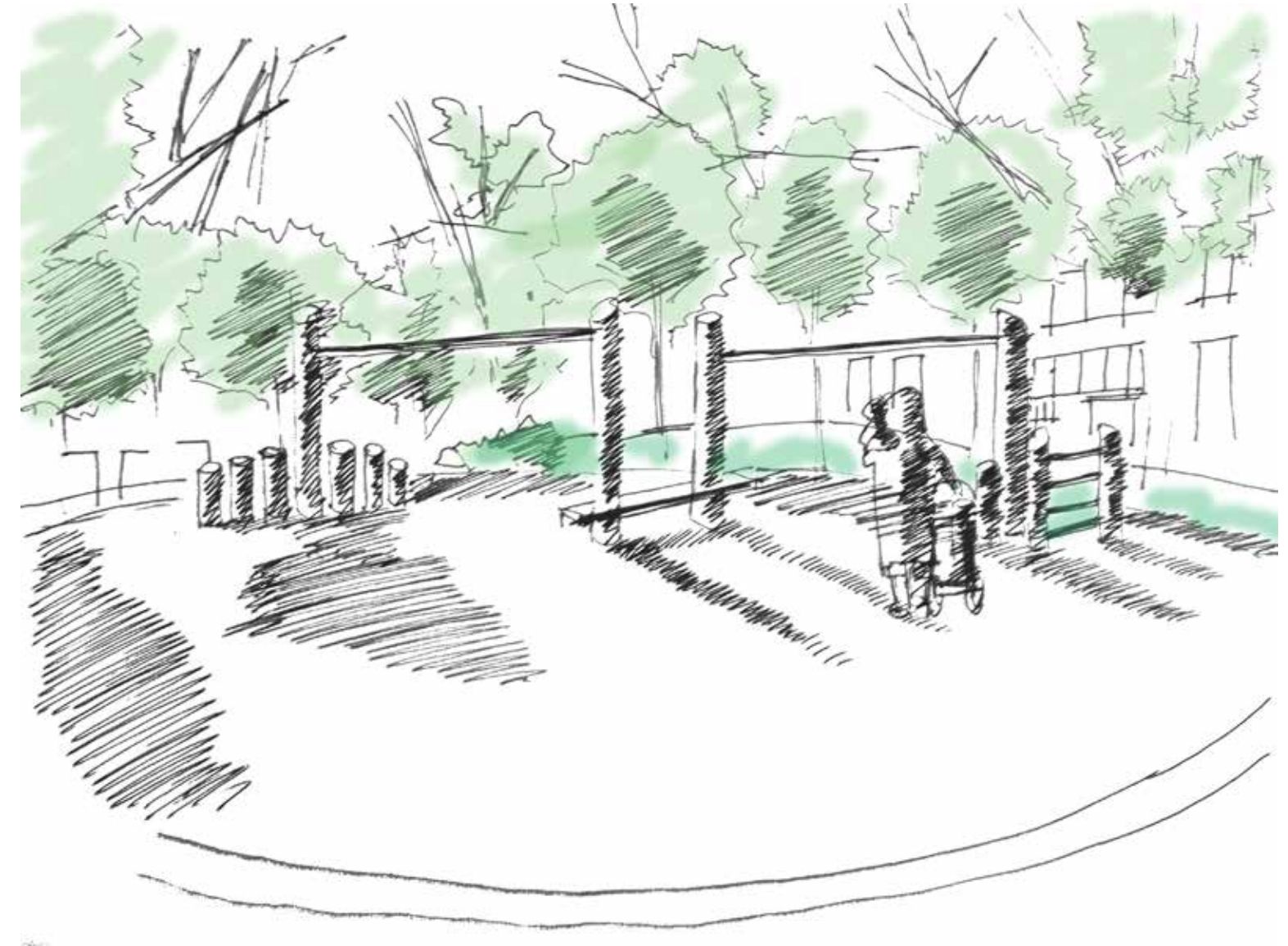
a neighborhood experience



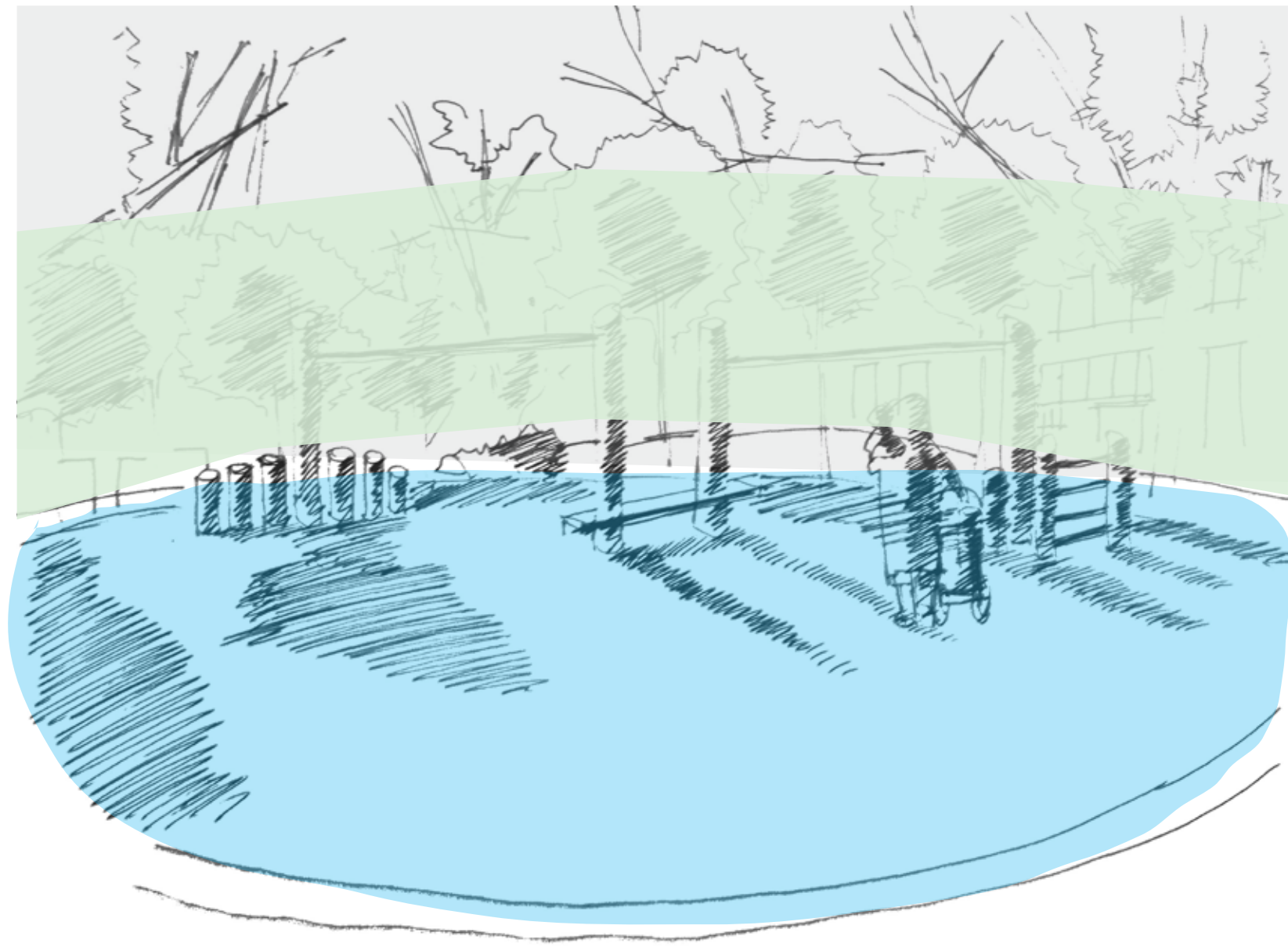
location

South Park is a neighborhood park in SOMA area, San Francisco. It has a round stripe shape in between of two city blocks and is surround by many galleries, cafe and restaurants, as well as architecture firms.

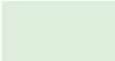
Its a good example of how the renovation of a public space could help the neighborhood improvement.



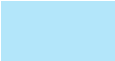
Definition of space



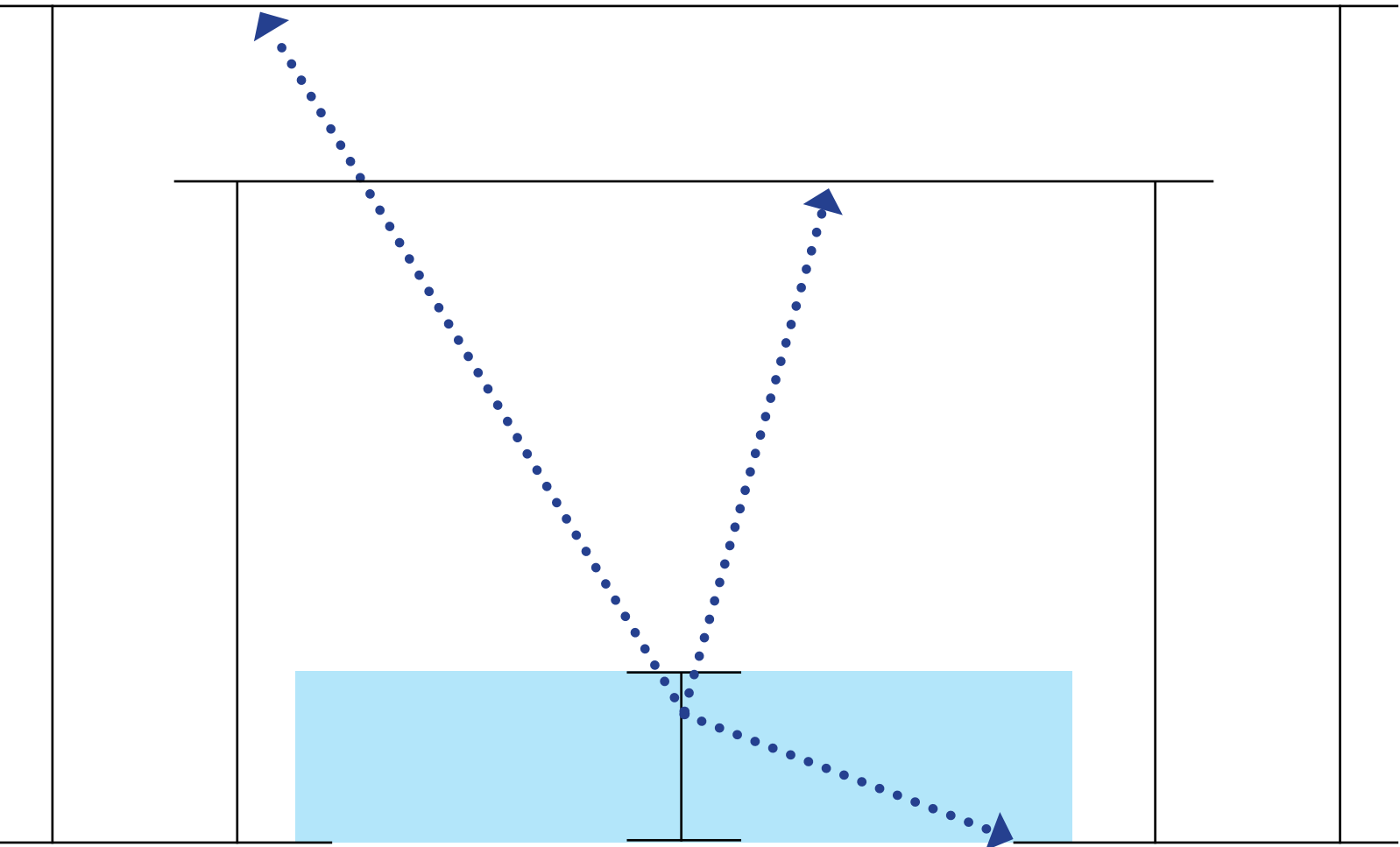
building - boundary



trees - edge



playground - activity



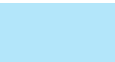
building

tree

pedestrian

tree

building



limited activity space

Scale

Mission & 24th St

walking experience



Mission



Mission used to be one of the areas that is sketchy and undesirable. It's mixed with latinos, American whites and Asians. Its dark history now is replaced by restaurants, artists, wall paintings and revived neighborhoods like Valenica and 24th.

The street sidewalks are expanded and streetscapes are re-designed. More and more high-end commerce get into the business here. Hipsters also enjoyed here.

In the future it will probably become upgraded completely from the “old dangerous” image.

